



Wayne Pipe & Supply, Inc

Pump Division Serving Northeast Indiana & Northwest Ohio

6040 Innovation Blvd. ♦ Fort Wayne, Indiana 46801

Telephone: (260) 423-9577 Fax: (260) 422-7794 1-800/552-3697

Pumps

ARO
Armstrong
Bell & Gossett
Brown & Sharpe
Burks Pump
Crane Pumps & Systems

Grundfos
Gusher
Hoffman Specialties
Hydromatic
Ingersoll-Rand
Pacer
Flint & Walling

Price
Thrush
Viking
Weil
Wright
Zoeller

Network access to most pump brands

Pumping Equipment Types

Centrifugal	Sanitary
Drum	Submersible
Chemical	Self Priming
Coolant	Sewage
Condensate	Slurry
Diaphragm	Steam
Magnetic Drive	Sump
Piston	Vacuum
Plunger	Vane
Regenerative Turbine	Vertical Turbine

Repair and Service

All makes and types
Pick up and delivery
Complete shop facilities
Factory trained technicians

Mechanical Seals

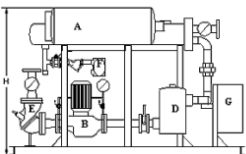
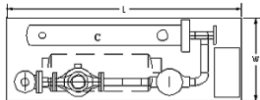
Fluidol Mechanical Seals

After Market Pumps and Parts

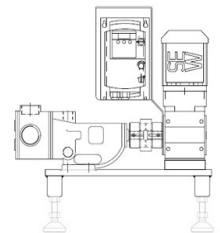
Durco
Gorman Rupp

Goulds
Ingersoll-Rand

Heat Exchangers



Email: pumpsales@waynepipe.com



Viking gear Pump layout



Wayne Pipe & Supply, Inc

Pump Division Serving Northeast Indiana & Northwest Ohio

6040 Innovation Blvd. ♦ Fort Wayne, Indiana 46801

Telephone: (260) 423-9577

Fax: (260) 422-7794

1-800/552-3697

Application Questions

1	Media (Water, oil, chemical, etc.): _____
2	Flow (GPM, GPH, etc.): _____
3	Operating Temperature (F, C): _____
4	Viscosity (SSU, cps, water-like, etc.): _____
5	Specific Gravity (Water =8.33 per gal.): _____
6	Percent of solids (If any): _____
7	Suction conditions: _____ a) Flooded (Feet of Head); or suction lift (Feet of Head): _____ b) Pipe size: _____
8	Discharge pressure (PSI, Ft. of Head): _____ a) Pipe size: _____
9	Duty (8 hrs per day, 5 days per week, continuous): _____
10	Drive: _____ a) Electric (Voltage / Phase / enclosure): _____ b) Air : _____ c) Hydraulic: _____
11	Model number of existing pump or replacement pump if known.

Suggested accessories

1	Back-pressure relief valve
2	Check valve
3	Gauges

